

Review Whately's zoning bylaw and subdivision regulations and suggest updates for open space protection, stormwater management, habitat, water resource protection, drought tolerance, and other open space priorities.

MILL RIVER: Conduct a geomorphic assessment of the Mill River Watershed and identify flooding and fluvial erosion threats to Whately's public water supply wells and other critical infrastructure within the watershed.

TRI-TOWN BEACH: Coordinate with the Town of Deerfield and the Tri-Town Beach District Commission to determine how Tri-Town Beach can meet the needs of a greater number of residents and present as more welcoming.

Develop programming responsive to the results of the 2021 OSRP survey, including lectures, workshops, and outdoor activities, with an emphasis on history, natural history and the environment.

Create a Town Trail Plan, including an assessment of existing trail conditions and existing and potential trail routes.

Provide information to the Whately community about open space and recreation (including trail information), and resource protection (e.g., drought and heat-tolerant landscaping, pesticide use, good forest stewardship practices).

Create an invasive plant management plan to inventory sites, prioritize areas for treatment and provide recommendations for treatment and ongoing maintenance activities.

Convene annual meetings to discuss progress on OSRP action items

■ Permanently Protected Open Space

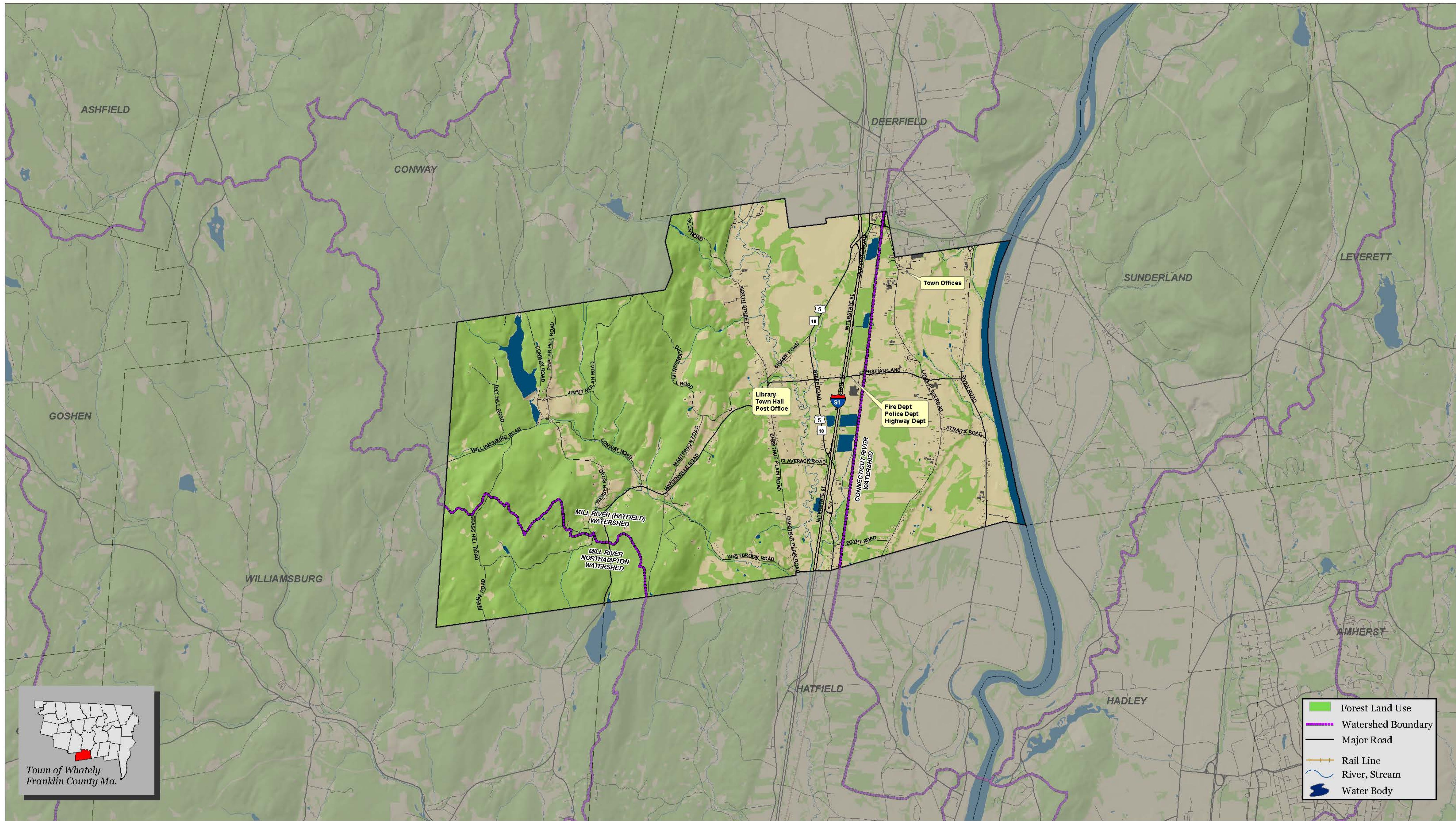


Town of Whately Open Space & Recreation Plan 2021

Action Plan



Sources: Map produced by the Franklin Regional Council of Governments Planning Department. GIS data sources include MassDOT, MassGIS and FRCOG. Depicted boundaries are approximate and are intended for planning purposes only, not to be used for survey.

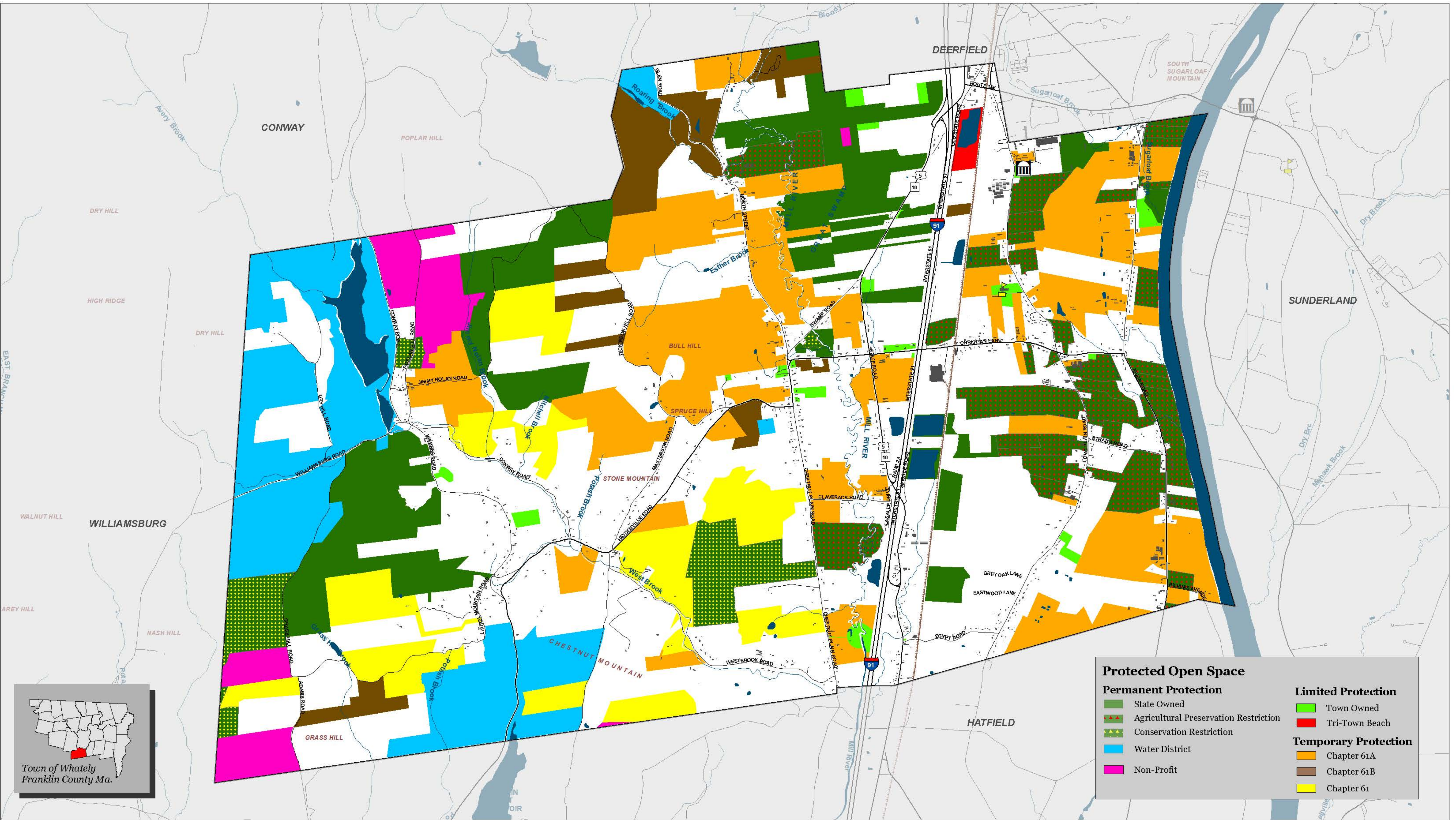


Town of Whately Open Space & Recreation Plan 2021

Context Map

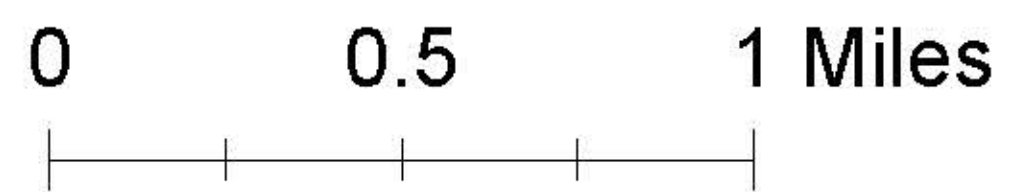


Sources: Map produced by the Franklin Regional Council of Governments Planning Department. GIS data sources include MassDOT, MassGIS and FRCOG. Depicted boundaries are approximate and are intended for planning purposes only, not to be used for survey.

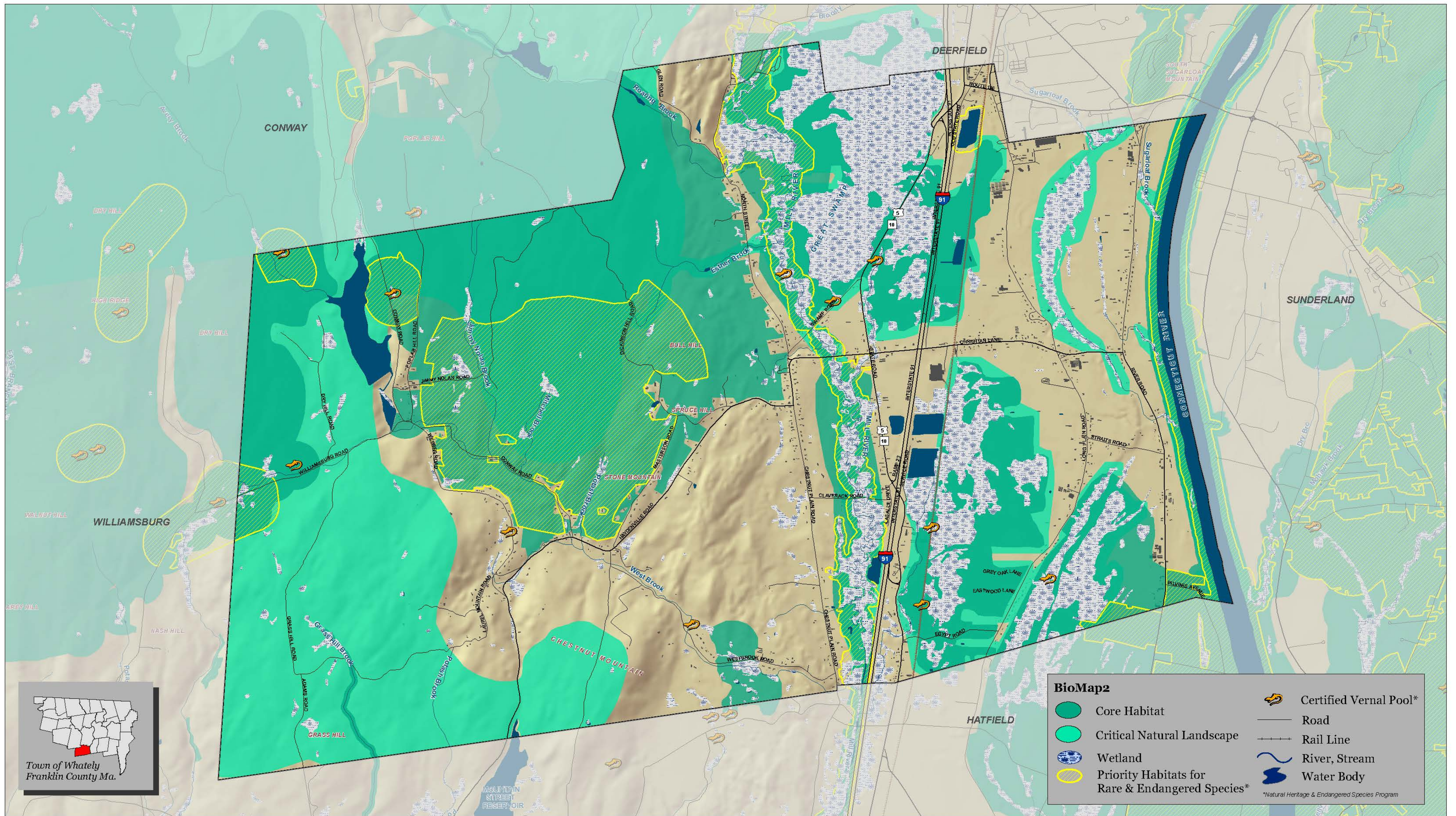


Town of Whately Open Space & Recreation Plan 2021

Open Space



Sources: Map produced by the Franklin Regional Council of Governments Planning Department. GIS data sources include MassDOT, MassGIS and FRCOG. Depicted boundaries are approximate and are intended for planning purposes only, not to be used for survey.

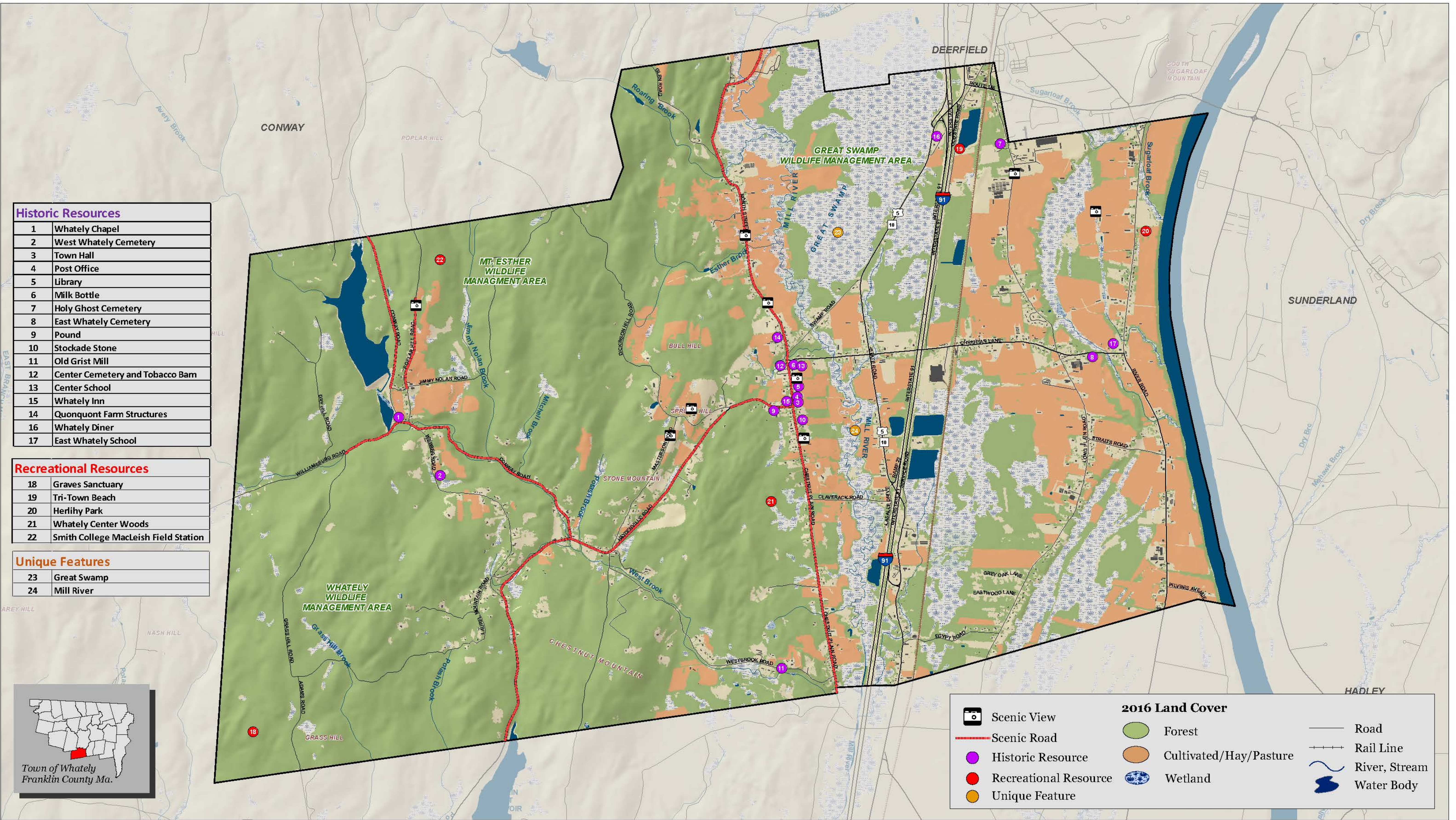


Town of Whately Open Space & Recreation Plan 2021

Plant & Wildlife Habitat

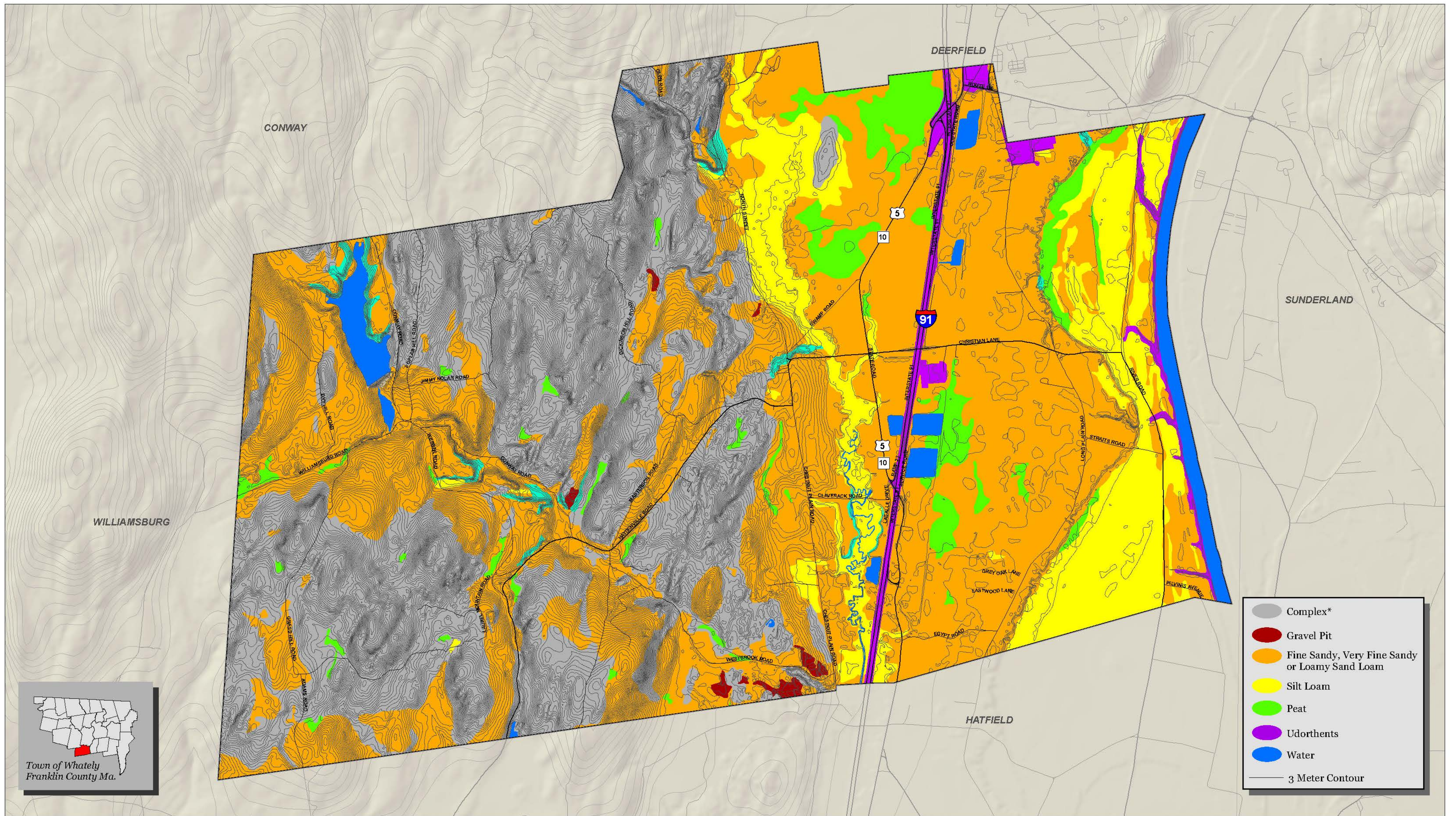


Sources: Map produced by the Franklin Regional Council of Governments Planning Department. GIS data sources include MassDOT, MassGIS and FRCOG. Depicted boundaries are approximate and are intended for planning purposes only, not to be used for survey.



Town of Whately Open Space & Recreation Plan 2021

Scenic Resources & Unique Features



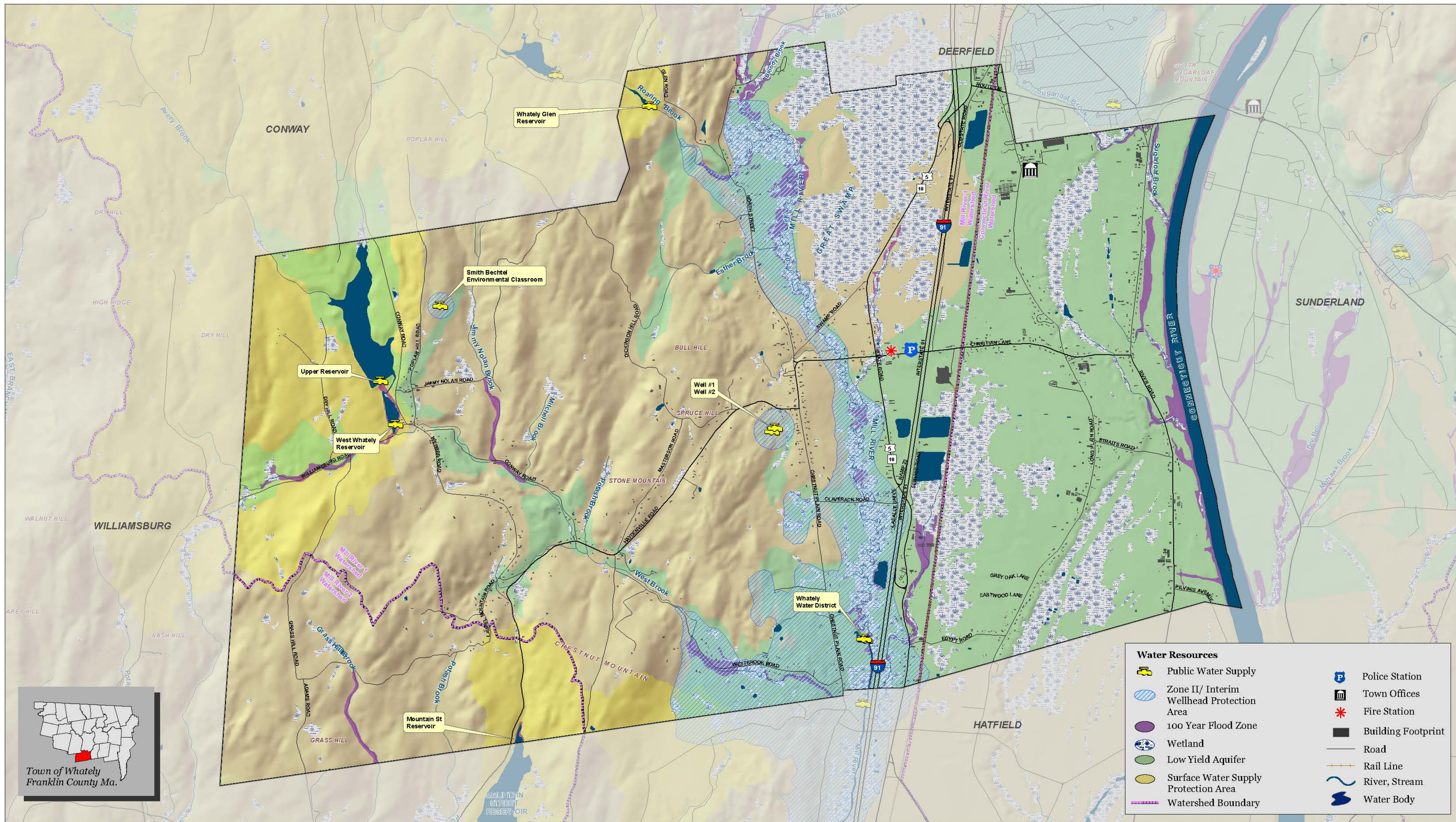
Town of Whately
Open Space &
Recreation Plan 2021

USDA - NRCS
Soil Composition

0 0.5 1 Miles



Sources: Map produced by the Franklin Regional Council of Governments Planning Department. GIS data sources include MassDOT, MassGIS and FRCOG. Depicted boundaries are approximate and are intended for planning purposes only, not to be used for survey.



Town of Whately Open Space & Recreation Plan 2021

Water Resources



Sources: Map produced by the Franklin Regional Council of Governments Planning Department
GIS data sources: include MassDOT, MassGIS and FRCOG
Depicted boundaries are approximate and are intended for planning purposes only, not to be used for survey